

Deploy Domino Portlets on IBM WorkPlace

Author: *Raghu Macha*

Tech profile: *IBM Lotus Domino 6.5, IBM Workplace
Collaboration Services 2.6, IBM Tivoli Directory Server (LDAP)*

Task: *Deploy Domino Portlets on IBM Workplace*

Find out how to deploy Domino applications on an IBM Workplace you've integrated with IBM Directory Server (LDAP).

By Raghu Macha

You might have discovered you can't deploy Domino applications (portlets) on an IBM Workplace you've integrated with IBM Directory Server. If you'd like to deploy Domino applications on IBM Workplace without making any significant changes to your current set up, you're in the right place! This article shows you the necessary steps to deploy Domino portlets in your environment.

To deploy any Domino portlets, you must integrate a Lotus Domino server with your existing IBM Workplace environment so you can use the same user repository. For this article, I'll show you how to use IBM Directory Server (LDAP) as your user repository.

I'll show you how to integrate Domino 6.5 with IBM Directory Server (LDAP) to use Domino Portlet Builder to create and deploy Lotus Domino applications in IBM Workplace Server 2x/1x. The technique I describe also works for other UNIX platforms (Linux, AIX, Solaris, etc.), but the installation steps for Domino and IBM Directory Server might be different from Windows.

In this article, I make the following assumptions:

- You have IBM Workplace 2x/1x installed and configured with IBM Directory Server on the Windows platform.
- You're installing Domino 6.5 and Notes 6.5 on a fresh Intel box where you don't have any Web (IIS or IBM Http Server) server running.

Installation and configuration

Installing Domino is simple and straightforward. You insert the installation media, begin the install, and accept the Domino Enterprise Server when it gives you the option to select it. Just continue with the default settings on the rest of the screens until you finish the installation.

Next, follow these steps to configure and start Domino 6.5:

1. From the Windows desktop, click on Start > Programs > Lotus Applications > Lotus Domino Server to start Domino Server.
2. Choose Start Domino as a regular application and click on OK to continue.
3. Click on Next at the "Welcome to Domino Server Setup!" screen.
4. Choose "Setup the first server or stand-alone server" and click on Next; this will set up a new Domino server and a new Domino domain.
5. Enter a server name and description. Do NOT use an existing ID. You have to be careful when choosing the server name because it isn't easy to change it later. I recommend you use your hostname as your server name.
6. Enter your Organization name and certifier password, making sure you don't use an existing certifier ID. Click on Next. The Organization name is usually your company name. Tip: Don't choose a long name for the Organization name; for example, instead of entering Acme Corporation, use Acme.
7. Enter your Domino domain name and click on Next to continue.
8. Enter the Domino Administrator name and password and click on Next. I recommend you use a last name only to create a generic Administrator ID several people can use.
9. To set up Domino to test the Domino Portlet Builder, the only service you should select on this screen is Web Browsers (HTTP Services), and on the same screen you must click on customize and select DIIOP CORBA Services. Click on OK and then Next to continue.
10. You can accept all the defaults until you finish the configuration.
11. Start Domino by clicking from the Windows Desktop, Start > Programs > Lotus Applications > Lotus Domino Server to apply the configuration changes.

Now, follow these steps to install Notes:

1. Insert the installation media and begin install, accepting the defaults.
2. Choose your program and data directory. I suggest you use c:\Lotus\Notes and c:\Lotus\Notes\data, and click on Next to continue.
3. On the "Select the program features..." click on Domino Administrator and choose "this feature will be installed on the local hard drive" and click on Next. Click on Install and Finish to complete the installation.

Next, follow these steps to configure Notes to connect to Domino:

1. Start the Notes client configuration by going to Start > Programs > Lotus Applications > Lotus Notes from the Windows desktop.
2. Click on Next at the Lotus Notes Welcome screen to continue.
3. At the User information panel, enter the Domino administrator name (e.g., Raghu Macha) and the Domino server name with the organization. For this example, I entered the value as testld2/virtualinnovationcenter, testld2 is my hostname and virtualinnovationcenter is my domain. Check the box to connect to a Domino server. Click on Next to continue.
4. Enter the Administrator password and click on OK to continue.
5. Do *not* set up Instant Messaging (IM). Deselect the check box for IM and click on Next.
6. At the additional services panel, don't select any additional services. Just click on Finish and OK to complete Notes setup.

Domino configuration

Now for the Domino side of things. Open your Domino Administration client from the Windows desktop, click on Start > Programs > Lotus Applications > Lotus Domino Administrator to open admin client.

Follow these steps to let HTTP clients browse Domino databases:

1. From the Domino Administrator, click on Configuration, expand the Server toggle, and click on Current Server Document.
2. Click on Edit Server to enter the required properties.
3. Click on the Internet Protocols tab.
4. Click on HTTP.
5. Scroll down to R5 Basics and select the Yes radio button to "Allow HTTP clients to browse databases:"
6. Click on Save and Close to confirm you've modified the server Document to let HTTP clients browse the Domino database.

Then, follow these steps to create Directory Assistance:

1. From the Domino Administrator, click on Files.
2. Click on File > Database > New or press <CTRL> N to create a new database.
3. Change the server to your server name (e.g.testld2/virtualinnovationcenter).
4. Type in a title for the database "Directory Assistance."
5. Change the file name to da.nsf (this is an arbitrary field).
6. Change "Specify Template..." server to the same as in step 3 (testld2/virtualinnovationcenter).
7. Check "Show Advanced Templates" to show advanced templates.
8. Scroll down and click on Directory Assistance (6) (figure 1).
9. Click on OK to continue.

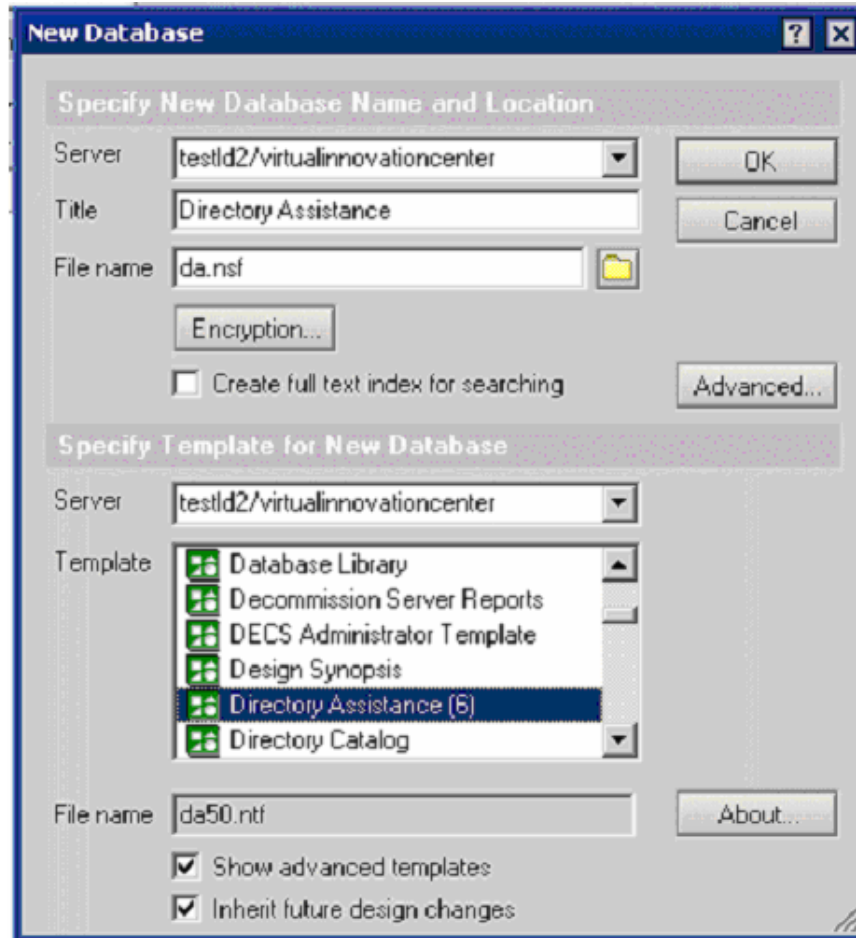


Figure 1: Create New Database

Figure 1: Create new database – description needed.

Now follow these steps to configure Directory Assistance:

1. Press <Esc> at the "About..." screen or open the Directory Assistance database.
2. Click on "Add Directory Assistance" and update the Basics tab with the following information:

Domain Type: LDAP

Domain Name (MUST BE DIFFERENT THAN DOMINO): WASLDAP

Company Name: Your Company

Search Order: 1

Select "Notes Clients & Internet Authentication/ Authorization"

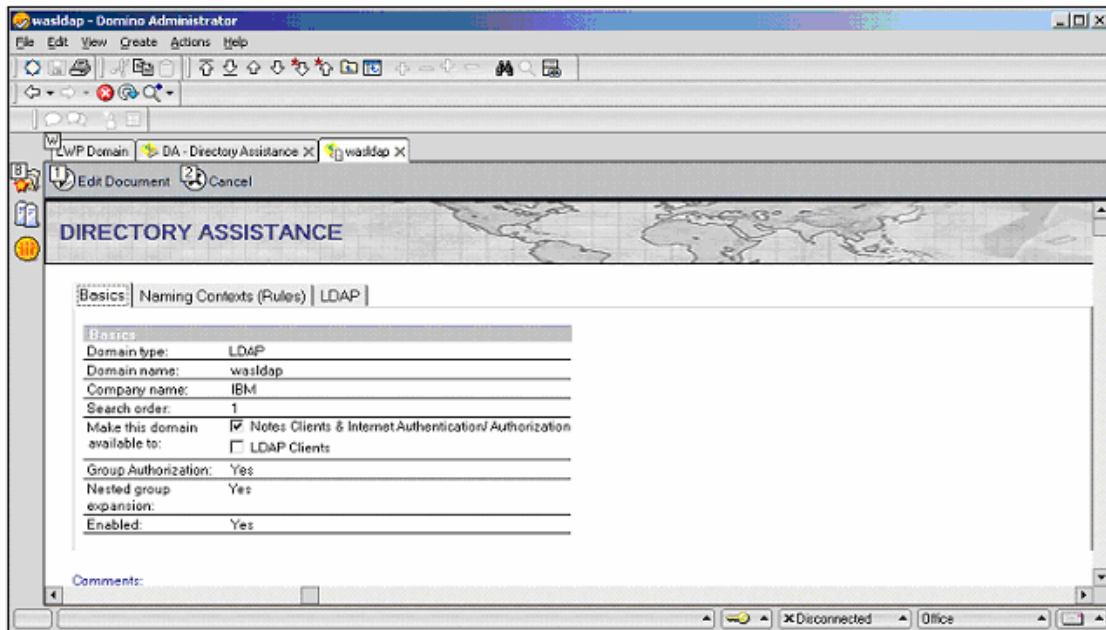


Figure 2: Configure Directory Assistance

1. Click on the Naming Context (Rules) tab, use the rule 1 and change "Trusted for Credentials" to YES

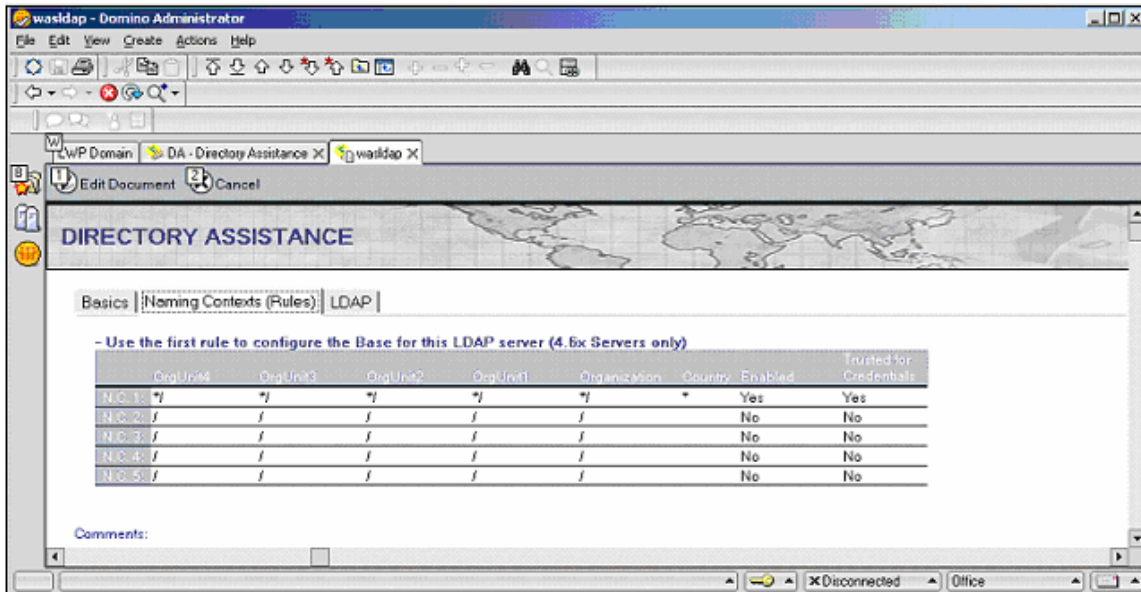


Figure 3: Configure Directory Assistance

2. Click on the "LDAP" tab to enter IBM Directory Server information. Enter the following information as shown in the following picture (Figure 4)

Hostname is the LDAP server: myldap.virtualinnovationcenter.com
Credential: cn=root
Password: password
Base DN for search: dc= virtualinnovationcenter, dc=com
Channel encryption: None
Port: 389

After entering the above information into the following screen, click on Save and then Close button to save all the properties you entered for Directory assistance.

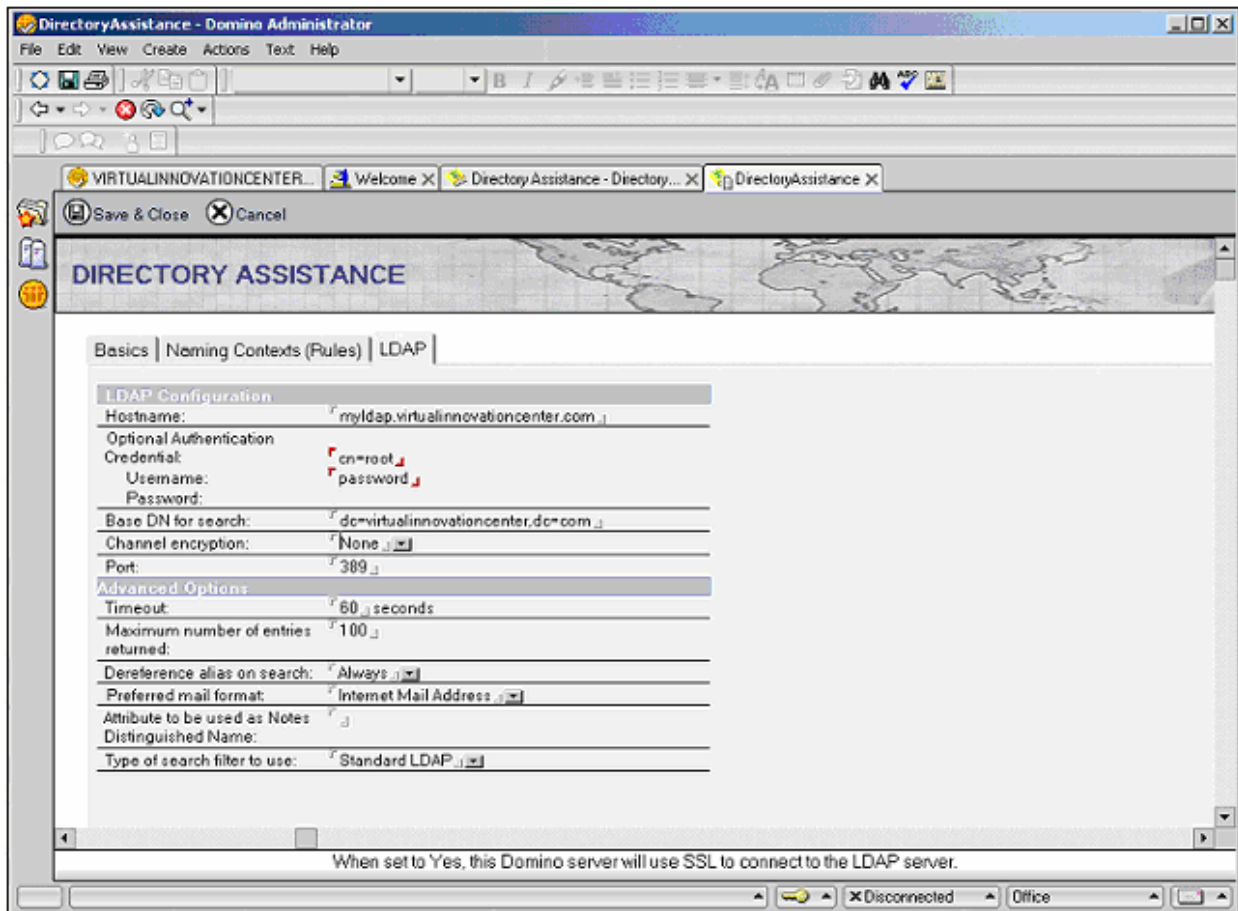


Figure 4: Configure Directory Assistance - Enter LDAP properties.

Now, update the Domino Server Document: In this section you'll update the domino server document with newly created database (**da.nsf** – Please refer to Figure 1 screen).

3. From the Domino Administrator client, click on "Configuration" to make changes to Domino Server document.
4. Click on Server drop down and click on "Current Server Document" to pick up the proper server document.
5. Click on "Edit Server" to make changes to the server document.

6. Click on the "Basics" tab to add required properties under basic section of server document.
7. Enter the directory assistance database name, da.nsf,
8. Click on Save and Close.

Note: See the following screen (Figure 5: Update Domino Server Document) for all the values you entered to update domino document. This confirms you've updated the Domino Server document with a newly created database (da.nsf)

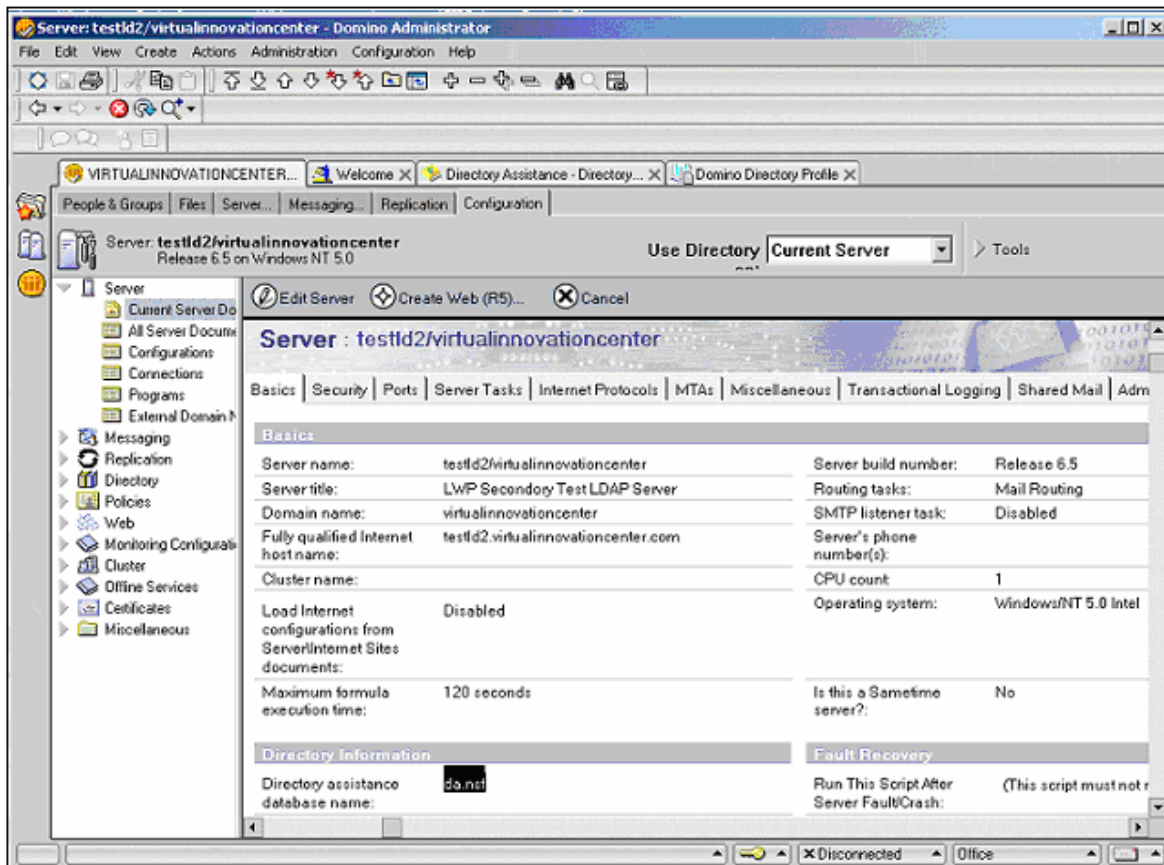


Figure 5: Update Domino Server Document

Now, at this point you cannot access Domino using short name (raghu), instead you have to use full name (Raghu Macha) to logon to Domino through IBM Lotus Workplace. It's not practically easy to enter First name and last name each time to login to Lotus Workplace. The following steps help you to enable your system to allow users to login with their short names:

1. From the Domino administrator, click on "Configuration," expand the Server toggle and click on "Current Server Document" to make required changes to enable login using short name.
2. Click on "Edit Server."
3. Select the "Security" tab and scroll down to the "Internet Access" section.
4. Change the "Internet authentication:" field to "More name variations with lower security." This property lets users login with their short name.

5. Click on Save, then Close.
6. Now you have to restart the Domino Server to take effect all the changes.
Type "restart server" on the Domino Console to restart the server.

Now, follow these steps to test the Directory assistance functionality works according to our expectations:

1. Make sure the Domino Server is running, with no errors of communication with the LDAP server.
2. Open a Web browser and point to the Domino directory, names.nsf, <http://testld2.virtualinnovationcenter.com/names.nsf>.
3. Login with an external, LDAP directory, user (a user that does not exist in the Domino directory).
4. If names.nsf has the default access control of "Default = Author," you will be presented with the Domino directory.

Now, you create Domino Database for Portlet Builder:

1. From the Domino Administrator click on "Files."
2. Click on File > Database > New or click on <CTRL> N.
3. Change the server to your server name (testld2/virtualinnovationcenter)
4. Type in a Title for the Database: "LWP Discussion Database"
5. Change the File Name to lwpdisc.nsf
6. Change "Specify Template..." Server to the same as above (testld2/virtualinnovationcenter)
7. Scroll down and click on Discussion – Notes & Web (6)
8. Click on OK to create the database that can be accessed by Domino dependent portlets from IBM Workplace.

Congratulation! You have successfully configured Domino with your IBM directory server (LDAP). Now you can deploy any of your Domino dependent portlets on your IBM Workplace.